

# Workforce Review

A monthly review of labor market information for Northern Santa Clara County

## November 2012

Did you know?

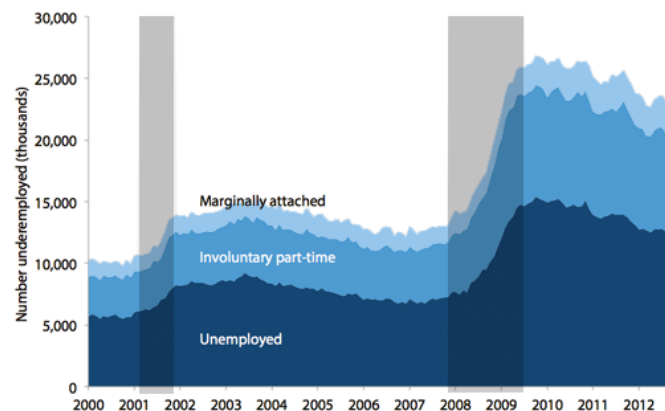
### Who are the 23 million 'underemployed' workers?

The number 23 million is often loosely used in public debate to mean the number of people “looking for work.” But who does this number count and not count? First, it includes 12.3 million people who meet the official definition of unemployment: jobless workers who are actively seeking work. Second, it includes the 8.3 million workers who are working part time but who want and are available for full-time work (“involuntary” part-timers). Third, it includes the 2.5 million people who want a job and are available to work, but have given up actively seeking work (“marginally attached” workers). These three groups together — 23.1 million strong — make up the group commonly referred to as the “underemployed.”

Who is not counted in that 23 million? Workers who are underemployed in a “skills or experience” sense (e.g., a mechanical engineer working as a barista). Unfortunately, there is no official measure that counts people who are underemployed in this way.

The figure below shows how the number of “underemployed” workers has evolved since 2000. The number of underemployed workers increased over the weak business cycle of 2000–2007 from 10.0 million in the fourth quarter of 2000 to 13.2 million in the fourth quarter of 2007. It then shot up in the Great Recession to a peak of 26.9 million in Oct. 2009 before modestly improving to its current level.

The number of underemployed workers in the labor market, 2000–2012



Note: Shaded areas denote recessions.

Source: Authors' analysis of Bureau of Labor Statistics' Current Population Survey public data series

Source: Economic Policy Institute (11/28/12)

[www.epi.org/publication/23-million-underemployed-workers/](http://www.epi.org/publication/23-million-underemployed-workers/)

Labor Force Statistics (San José–Sunnyvale–Santa Clara MSA)

Unemployment Rate	November 2011	October 2012	November 2012	Percentage Point Change	
				Monthly	Annual
San José–Sunnyvale MSA	9.1%	7.9%	7.8%	- 0.1	- 1.3
California	10.9%	9.8%	9.6%	- 0.2	- 1.3
United States	8.2%	7.5%	7.4%	- 0.1	- 0.8

Labor Force	November 2011	October 2012	November 2012	Percentage Change	
				Monthly	Annual
San José–Sunnyvale MSA	930,800	951,700	951,100	- 0.1%	+ 2.2%
Civilian Employed	846,100	876,400	877,000	+ 0.1%	+ 3.7%
Civilian Unemployed	84,700	75,300	74,100	- 1.6%	- 12.5%

Industry Statistics (San José–Sunnyvale–Santa Clara MSA)

Change in Employment	November 2011	October 2012	November 2012	Percentage Change	
				Monthly	Annual
<b>Total Nonfarm</b>	<b>892,800</b>	<b>922,600</b>	<b>925,400</b>	<b>+ 0.3%</b>	<b>+ 3.7%</b>
Construction	32,500	36,500	36,800	+ 0.8%	+ 13.2%
Manufacturing: Semiconductor...	43,200	41,900	42,000	+ 0.2%	- 2.8%
Leisure & Hospitality	75,900	81,000	79,200	- 2.2%	+ 4.3%
Information Industry	50,800	54,300	55,300	+ 1.8%	+ 8.9%
Government: City	13,000	12,800	12,700	- 0.8%	- 2.3%

NOTE: San José–Sunnyvale–Santa Clara MSA (Metropolitan Statistical Area) = Santa Clara and San Benito Counties

Source: California Employment Development Department, LMID

Labor Force by City (NOVA Seven-City Consortium)

	Labor Force			Unemployment			Unemployment Rate		
	November 2011	November 2012	Annual Change	November 2011	November 2012	Annual Change	November 2011	November 2012	Annual Change
<b>Santa Clara County</b>	<b>904,800</b>	<b>924,500</b>	<b>+ 2.2%</b>	<b>81,400</b>	<b>71,000</b>	<b>- 12.8%</b>	<b>9.0%</b>	<b>7.7%</b>	<b>- 1.3</b>
Cupertino	25,000	25,700	+ 2.8%	1,500	1,300	- 13.3%	5.8%	4.9%	- 0.9
Los Altos	13,100	13,500	+ 3.1%	600	500	- 16.7%	4.6%	3.9%	- 0.7
Milpitas	32,800	33,500	+ 2.1%	3,000	2,700	- 10.0%	9.3%	7.9%	- 1.4
Mountain View	43,300	44,400	+ 2.5%	2,900	2,500	- 13.8%	6.7%	5.7%	- 1.0
Palo Alto	32,400	33,300	+ 2.8%	1,600	1,400	- 12.5%	4.8%	4.1%	- 0.7
Santa Clara	58,300	59,600	+ 2.2%	4,800	4,200	- 12.5%	8.2%	7.0%	- 1.2
Sunnyvale	77,400	79,300	+ 2.5%	6,000	5,200	- 13.3%	7.7%	6.6%	- 1.1
<b>NOVA Region</b>	<b>282,200</b>	<b>289,300</b>	<b>+ 2.5%</b>	<b>20,300</b>	<b>17,800</b>	<b>- 12.7%</b>	<b>7.2%</b>	<b>6.2%</b>	<b>- 1.0</b>

NOTE: Totals may not add correctly due to rounding

Source: California Employment Development Department, LMID

Regional Layoff Activity

Company	WARN *	City	Affected	Cause	Layoff Summary	
Applied Materials	Yes	Santa Clara	17	RIF	Individuals Affected YTD †:	1,337
Savi	Yes	Mountain View	54	Closure	Events Current YTD †:	29
Company confidential	No	Mountain View	10	RIF	Events Previous YTD †:	47
			<b>81</b>			

\* **WARN: Worker Adjustment and Retraining Notification**  
(notice of mass layoff or closure)  
† **YTD: Year to Date**  
(Program year: July 1–June 30)

NOTE: Layoff data are reported by NOVA staff responding to layoff events and should be considered only an estimate of regional activity

Source: NOVA's internal Rapid Response database